

Gregory Streetscape Project Update



Ben McCabe
Project Manager
816-513-9849
ben.mccabe@kcmo.org

Project Objectives

- Increase Pedestrian and Bicycle Safety
- Reduce Traffic Speeds
- Provide for Alternative forms of Transportation

Overall Project



East Half - Main to Oak



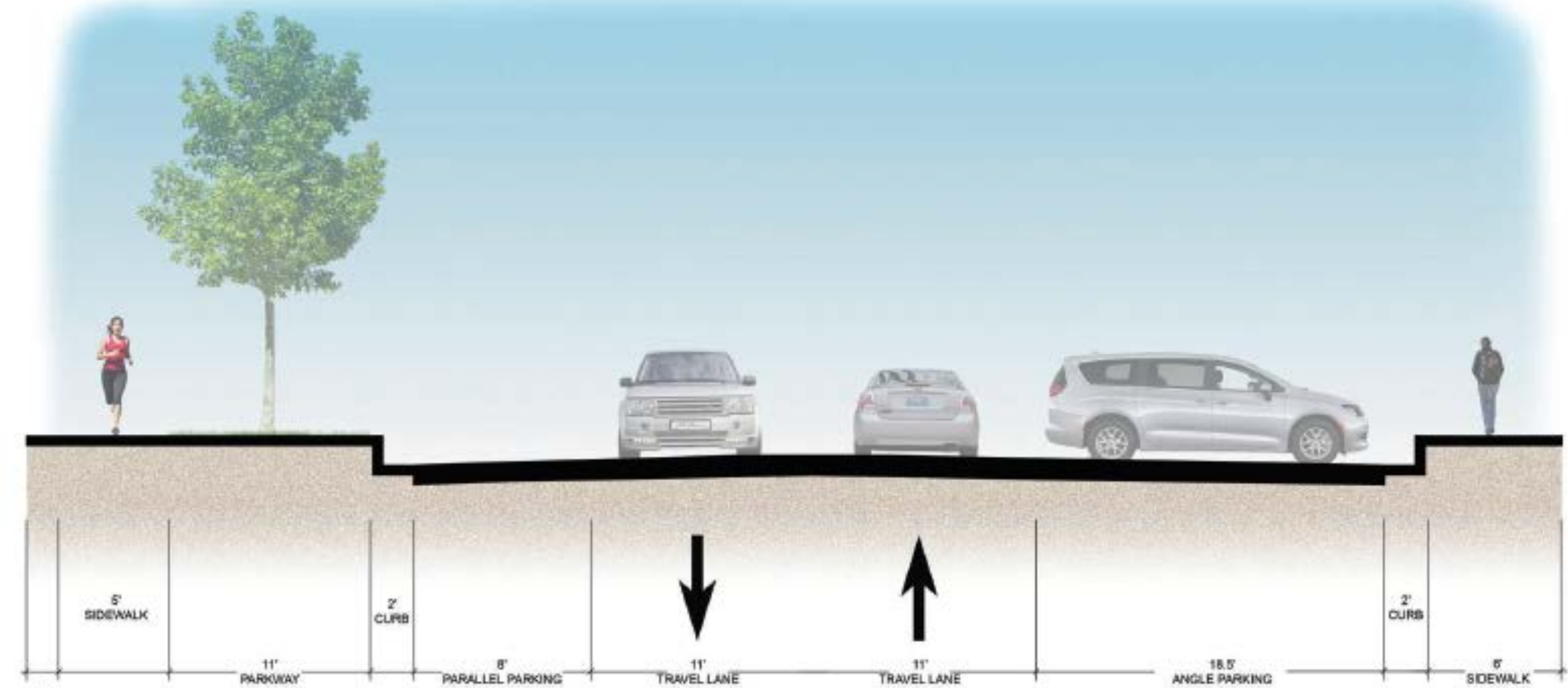
GREGORY BOULEVARD STREETScape
MAIN STREET TO OAK STREET



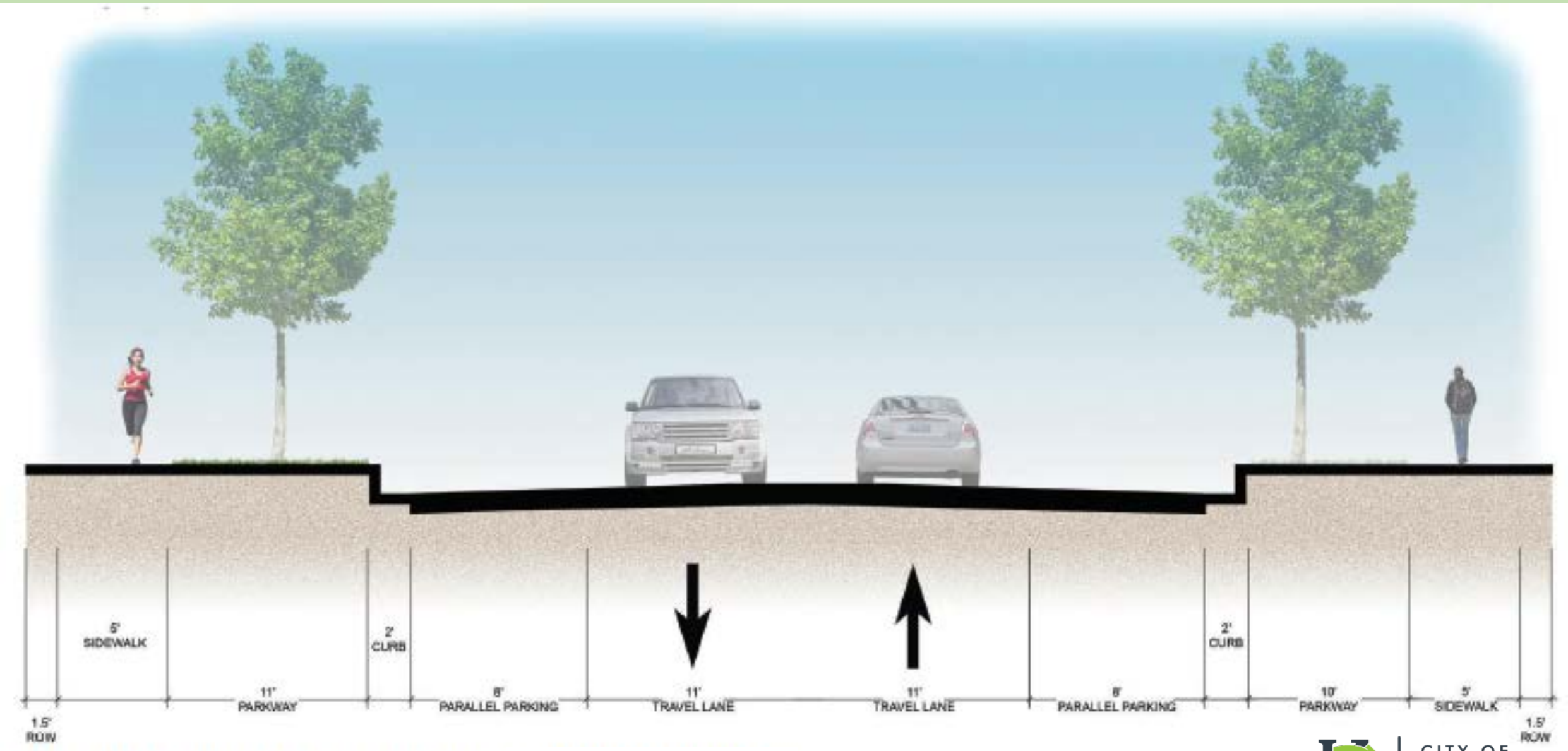
CITY OF
KANSAS CITY,
MISSOURI



HNTB
OCTOBER 2020



SECTION - MCGEE TO OAK STREET



SECTION - MAIN STREET TO

MC GEE

West Half - Wornall to Main



GREGORY BOULEVARD STREETScape
WORNALL ROAD TO MAIN STREET

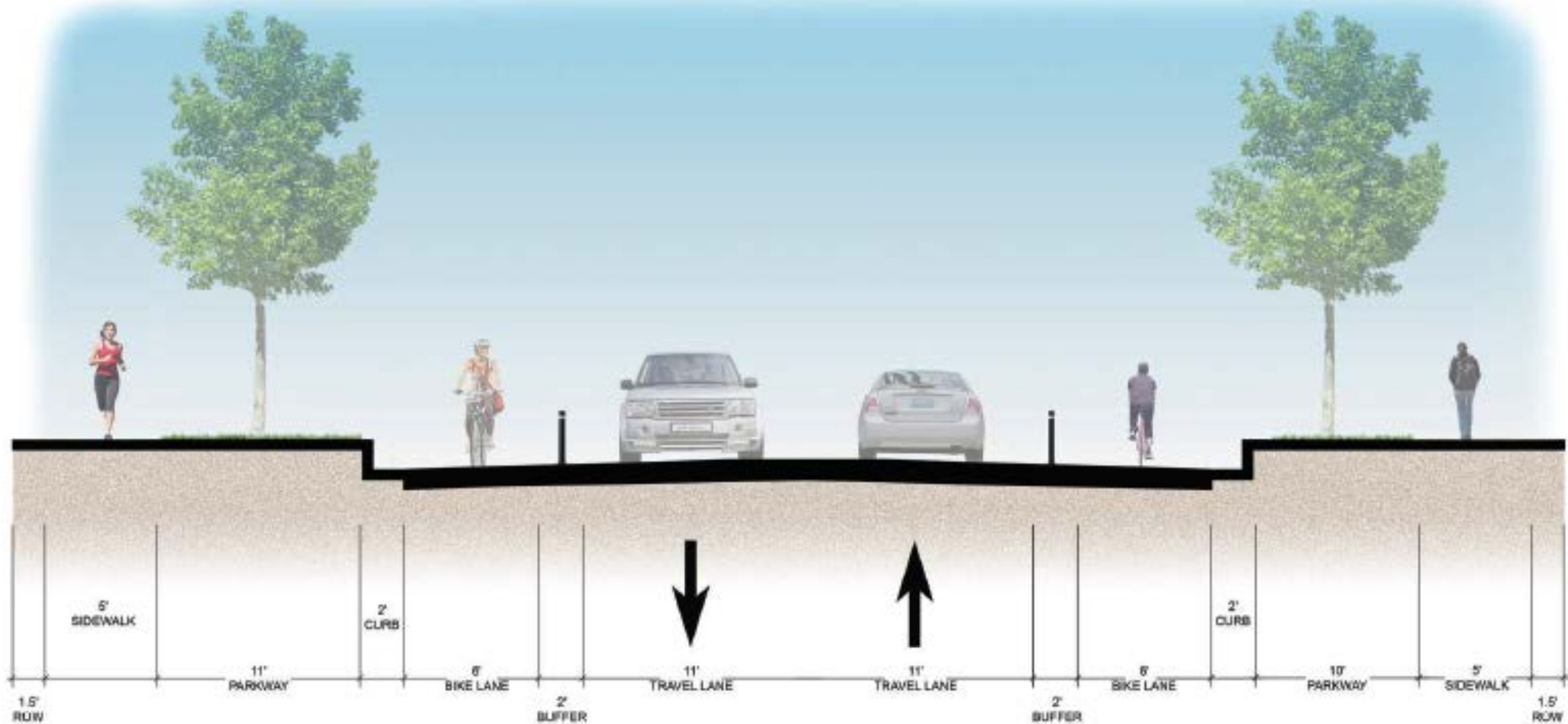


CITY OF
KANSAS CITY,
MISSOURI



HNTB

OCTOBER 2020



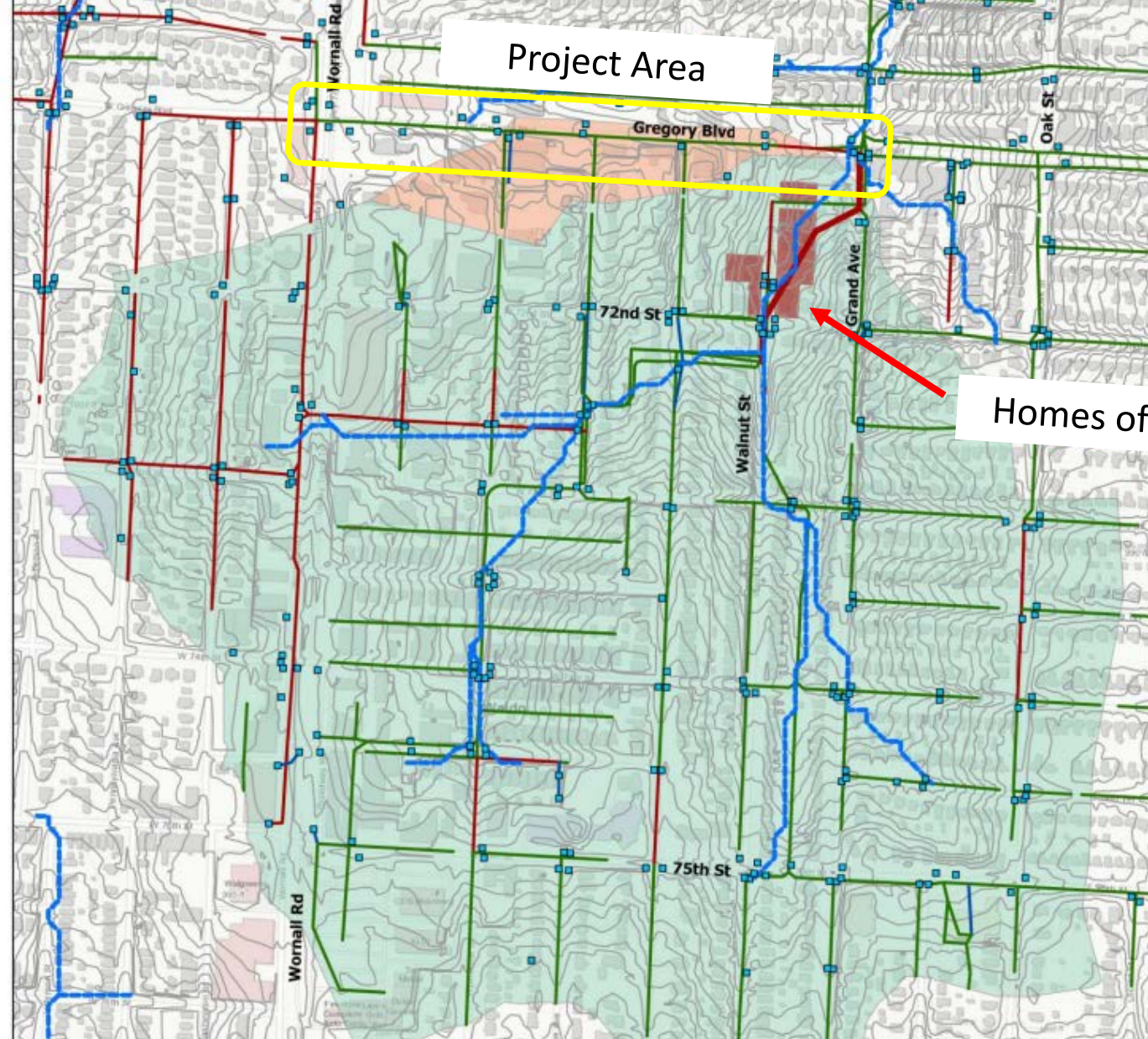
SECTION - WORNALL ROAD TO MAIN STREET



Separated Bicycle Facility

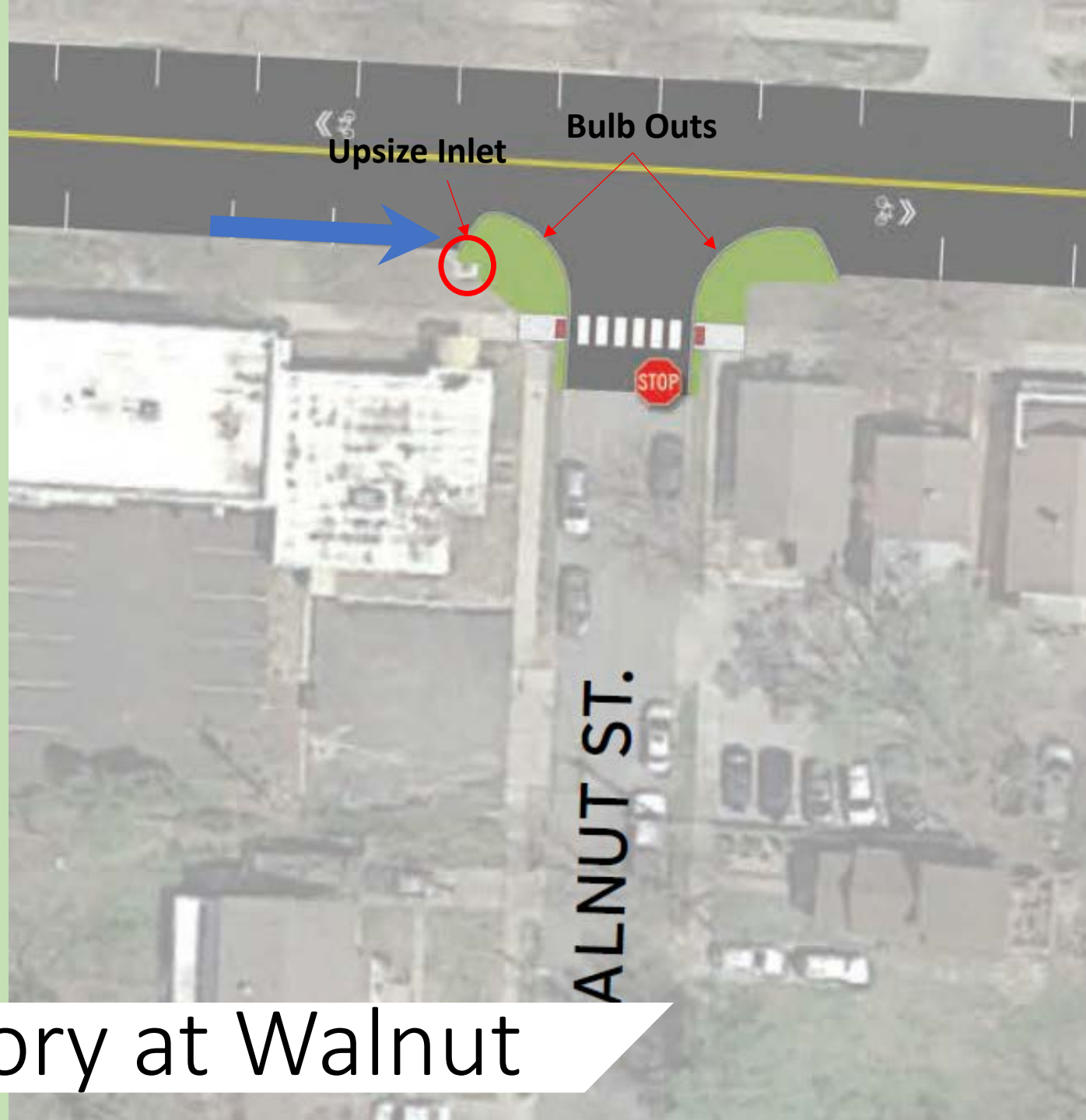
Challenges

- Coordination with overlay program
- Future maintenance of bike lanes
- Separated bike lane planter maintenance
- Decorative components at bulb-outs.
- Drainage



Gregory Drainage

<https://www.youtube.com/watch?v=v-nztoKQ3bk&feature=youtu.be>



Gregory at Walnut

Tentative Project Schedule

- Design – Spring 2021
- Funding/Phasing Decision – Winter 2020
- Construction – Summer 2021

Project Website

<https://www.kcmo.gov/Home/Components/FacilityDirectory/FacilityDirectory/191/360>



Thank You

Ben McCabe

ben.mccabe@kcmo.org

816-513-9849